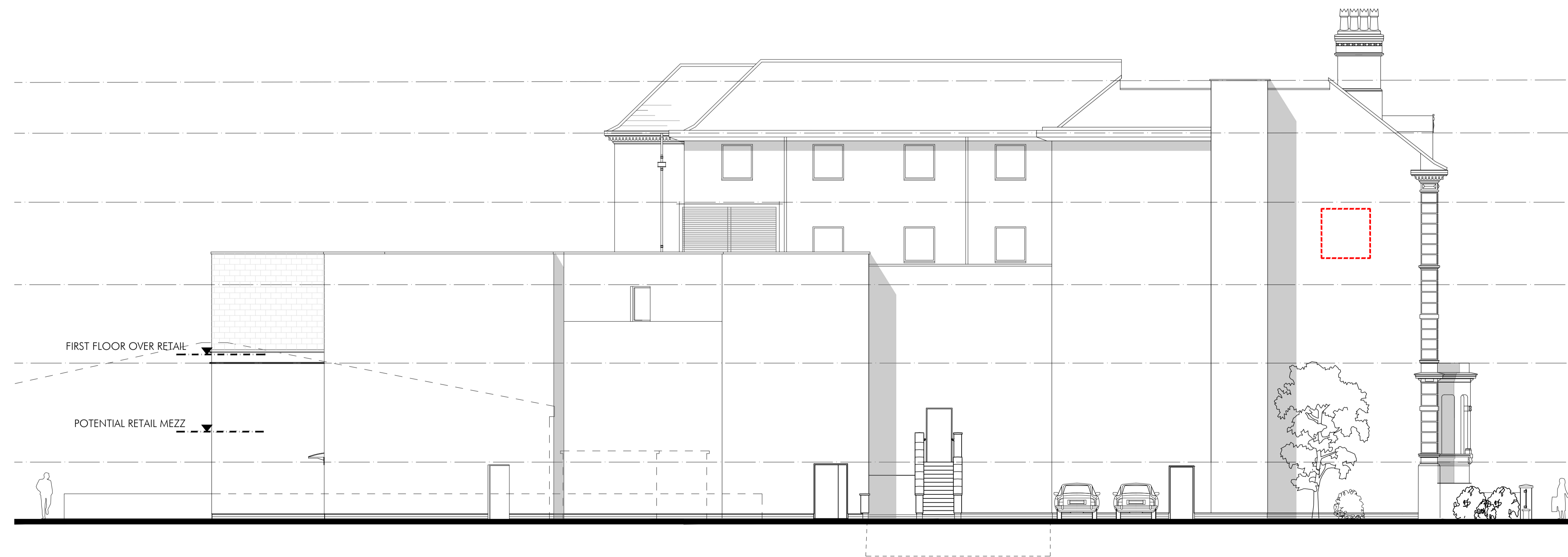


MOSTYN BROADWAY ELEVATION


0 1m 2m 3m 4m 5m 10m
SCALE 1:100 IN METERS

- INDICATES PREMIER INN SIGNAGE ZONE
- INDICATES RESTAURANT 3 (THYME) SIGNAGE ZONE
- INDICATES RETAIL UNIT 1 SIGNAGE ZONE
- INDICATES RETAIL UNIT 2 SIGNAGE ZONE
- INDICATES UNIT 3 SIGNAGE ZONE
- INDICATES GYM/OFFICE SIGNAGE ZONE



REAR ELEVATION (TO RETAIL PARK)

0 1m 2m 3m 4m 5m 10m
SCALE 1:100 IN METERS

AM DRAWN	REV A- ELEVATIONS UPDATED REVISION	18.08.20 DATE	JULY 17 VER
PROJECT REDEVELOPMENT TUNDO CASTLE LLANDUDNO		 ALLISON PIKE ARCHITECTS & DESIGNERS	
TITLE EXTERNAL SIGNAGE ELEVATIONS SHEET 2 OF 2			
SCALE 1:100 @ A1		7 Buxton Road West, Disley, Stockport, Cheshire, SK12 2AE. Telephone: 01663 763000 Facsimile: 01663 766772 Website: www.allisonpike.com Email: studio@allisonpike.com	
JOB No BAK 01	DRAWING No AP21		

PLANNING ISSUE