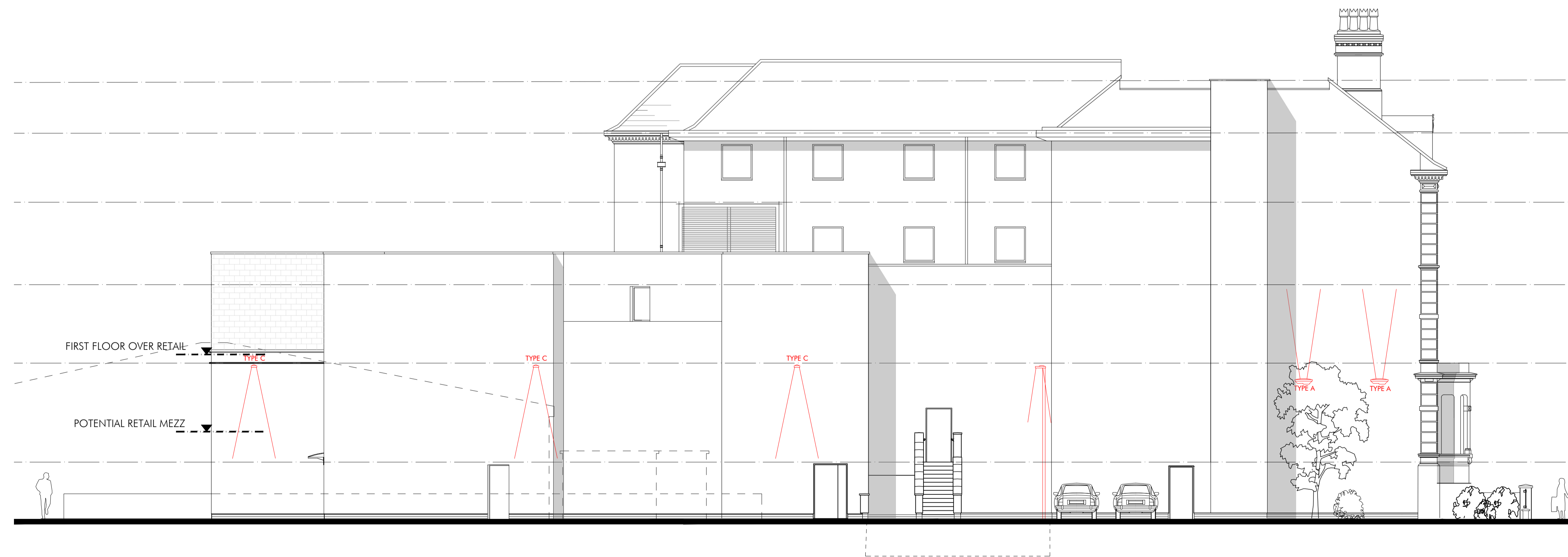




MOSTYN BROADWAY ELEVATION

0 1m 2m 3m 4m 5m 10m
SCALE 1:100 IN METERS



REAR ELEVATION (TO RETAIL PARK)

0 1m 2m 3m 4m 5m 10m
SCALE 1:100 IN METERS

BUILDING ILLUMINATION LEGEND

	<p>TYPE A - EXTERNAL LED SPOTLIGHTS</p> <p>FLOOD UPLIGHTING TO BUILDING ELEVATION USING 60 DEGREE SPREAD OF LIGHT. MAGENTA WASH EFFECT. NEW ELECTRICAL FEED REQUIRED. ACTUAL UNITS REQUIRE CAT5 CABLING TO EACH LOCATION.</p> <p>LIFE: 50,000 HOURS 36 X 1W LUXEON K2 LEDS PROPORTIONED HEAT SINK FOR EVEN HEAT DISPERSION 8 DEGREE LENS IP 65 WATER RESISTANT PROTECTION ALUMINIUM HOUSING OPERATING TEMPERATURE: +50C @ AMBIENT 25 OPERATING AMBIENT TEMP. RANGE: -20/+40C COOLING SYSTEM: CONVECTION POWER/240 VAC POWER CORD</p>
	<p>TYPE B - EXTERNAL WALL MOUNTED</p> <p>HOLOPHANE EMERGENCY MAINTAINED FITTING REF. GATEWAY REF2 FITTED MIN. 2m FROM GROUND LEVEL AGREE FINAL LOCATION WITH ARCHITECT ON SITE</p>
	<p>TYPE C - EXTERNAL WALL MOUNTED FLOOD LIGHTING</p> <p>ANSSELL - ONIX LED STREET LIGHT ACHIKLED/2 FLOODLIGHTING ONIX LED STREET LIGHT LED 40W - COOL WHITE</p> 
	<p>TYPE D - EXTERNAL 6M POST MOUNTED FLOOD LIGHTING</p> <p>ANSSELL - ONIX LED STREET LIGHT ACHIKLED/2 FLOODLIGHTING ONIX LED STREET LIGHT LED 40W - COOL WHITE</p> 

AM DRAWN	REV A - ELEVATIONS UPDATED DRAWN	18.08.20 JULY 17 DATE VER
<p>PROJECT REDEVELOPMENT TUNDO CASTLE LLANDUDNO</p> <p>TITLE EXTERNAL LIGHTING ELEVATIONS SHEET 2 OF 2</p>		
<p>SCALE 1:100 @ A1</p>		
<p>PLANNING ISSUE</p> <p>JOB No BAK 01</p>	<p>DRAWING No AP19</p>	<p>REV A</p> <div data-bbox="2582 1701 2878 1858" data-label="Image"> <p>ALLISON PIKE ARCHITECTS & DESIGNERS</p> </div> <p>7 Buxton Road West, Disley, Stockport, Cheshire, SK12 2AE. Telephone: 01663 763000 Website: www.allisonpike.com. Facsimile: 01663 766772 Email: studio@allisonpike.com</p> <p>© Allison Pike Partnership Limited.</p>