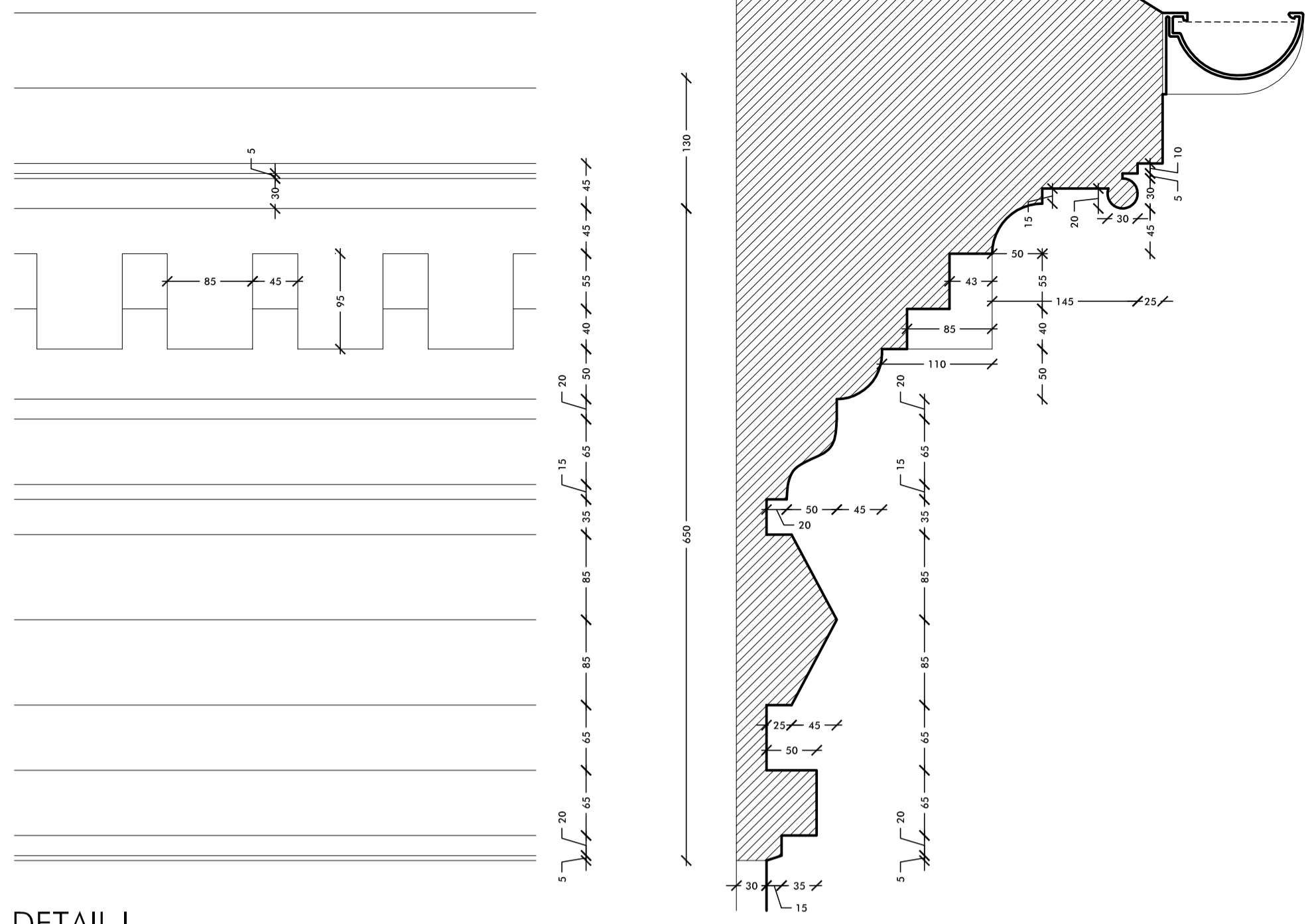
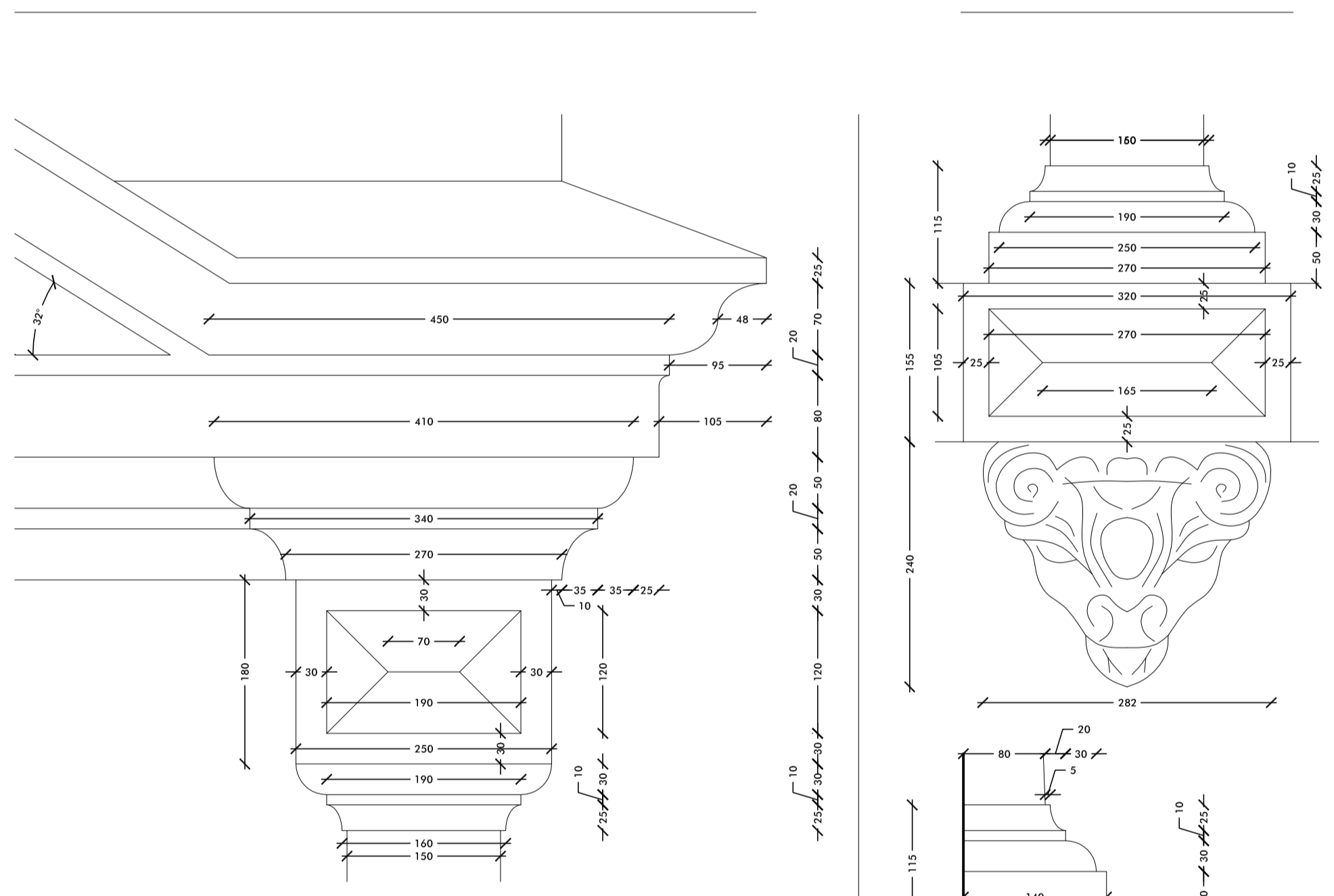


EXISTING WINDOW ELEVATION

SCALE 1:20



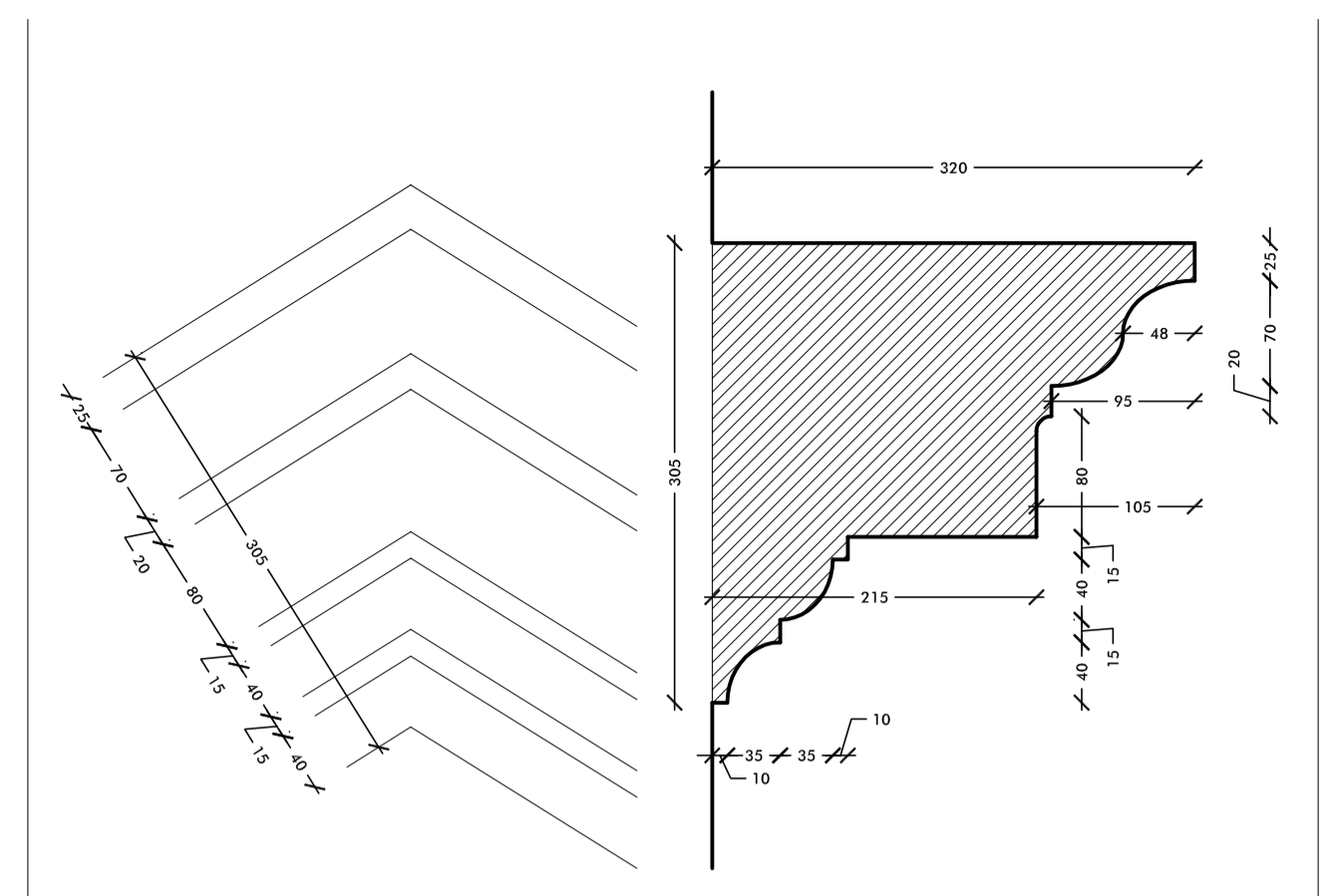
DETAIL I



DETAIL L

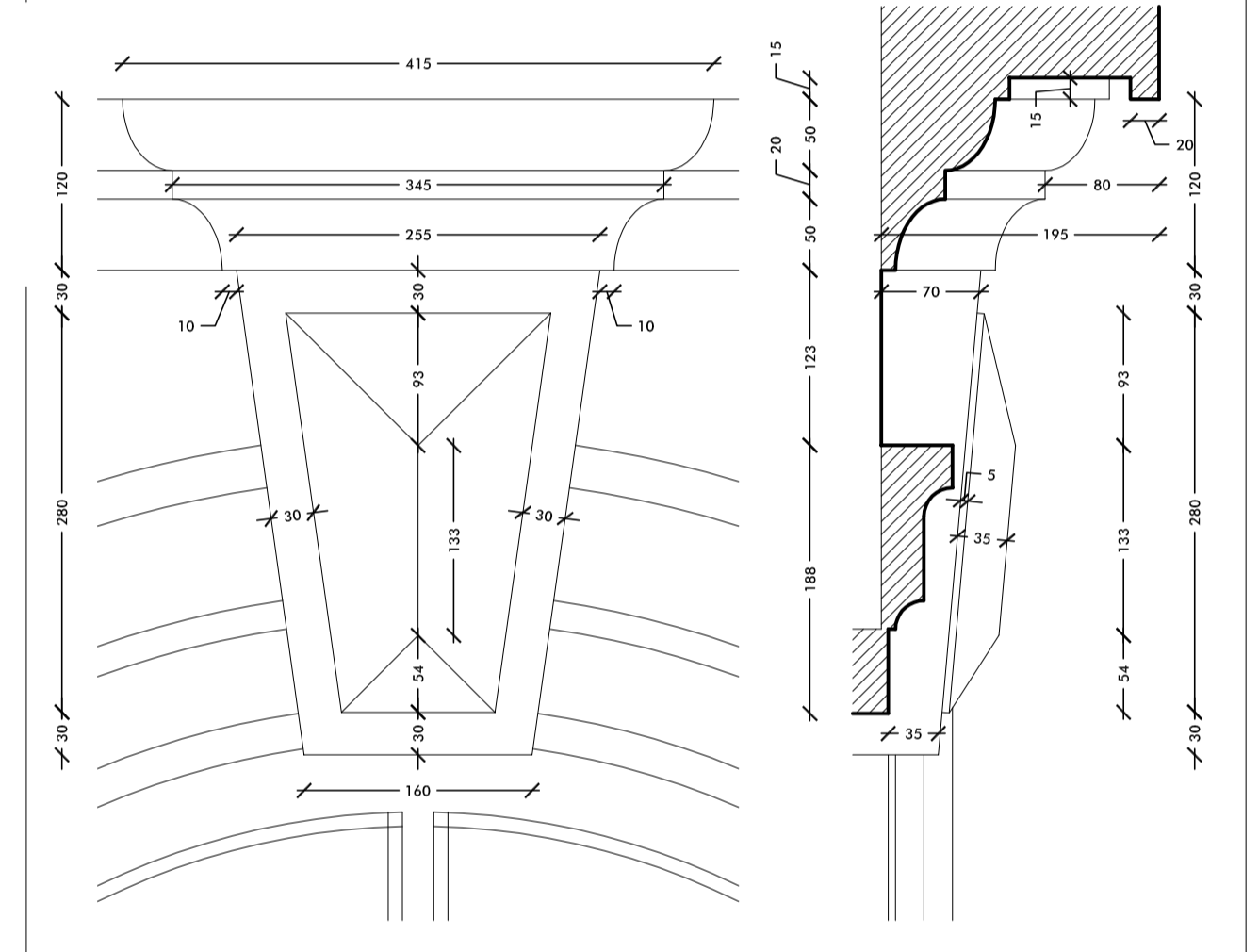


EXISTING SIDE ELEVATION - MOSTYN BROADWAY ELEVATION

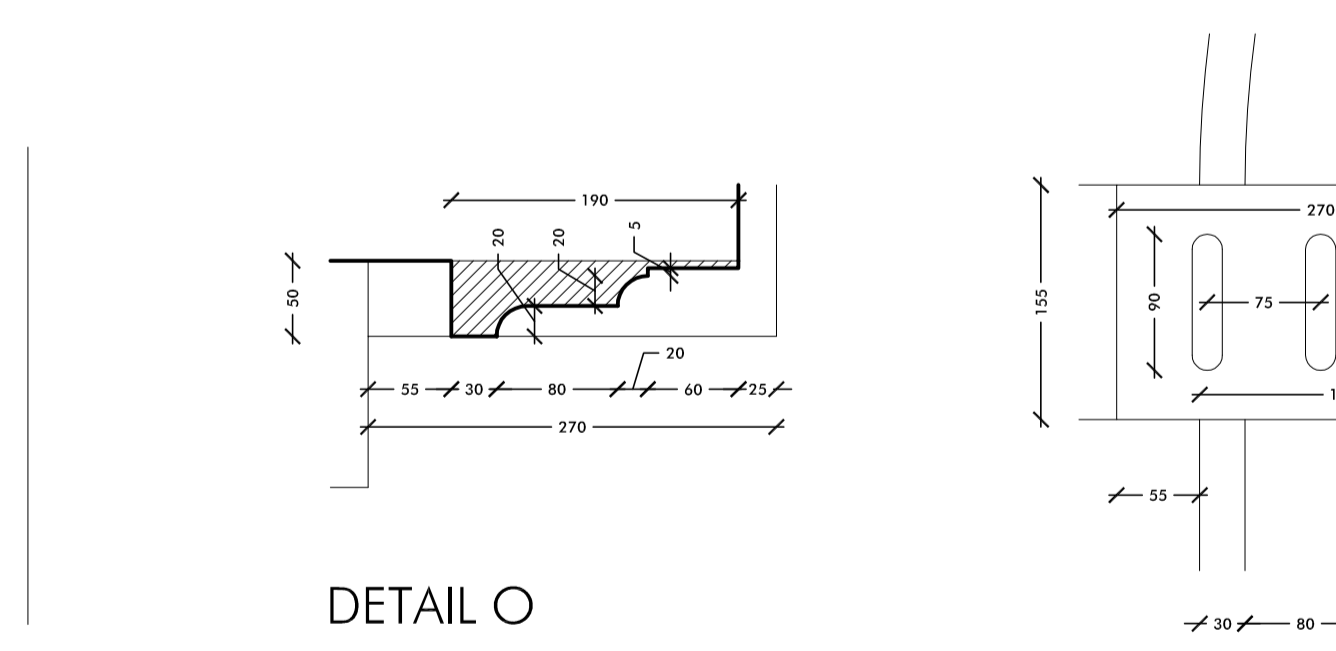


DETAIL J

SCALE 1:5



DETAIL M

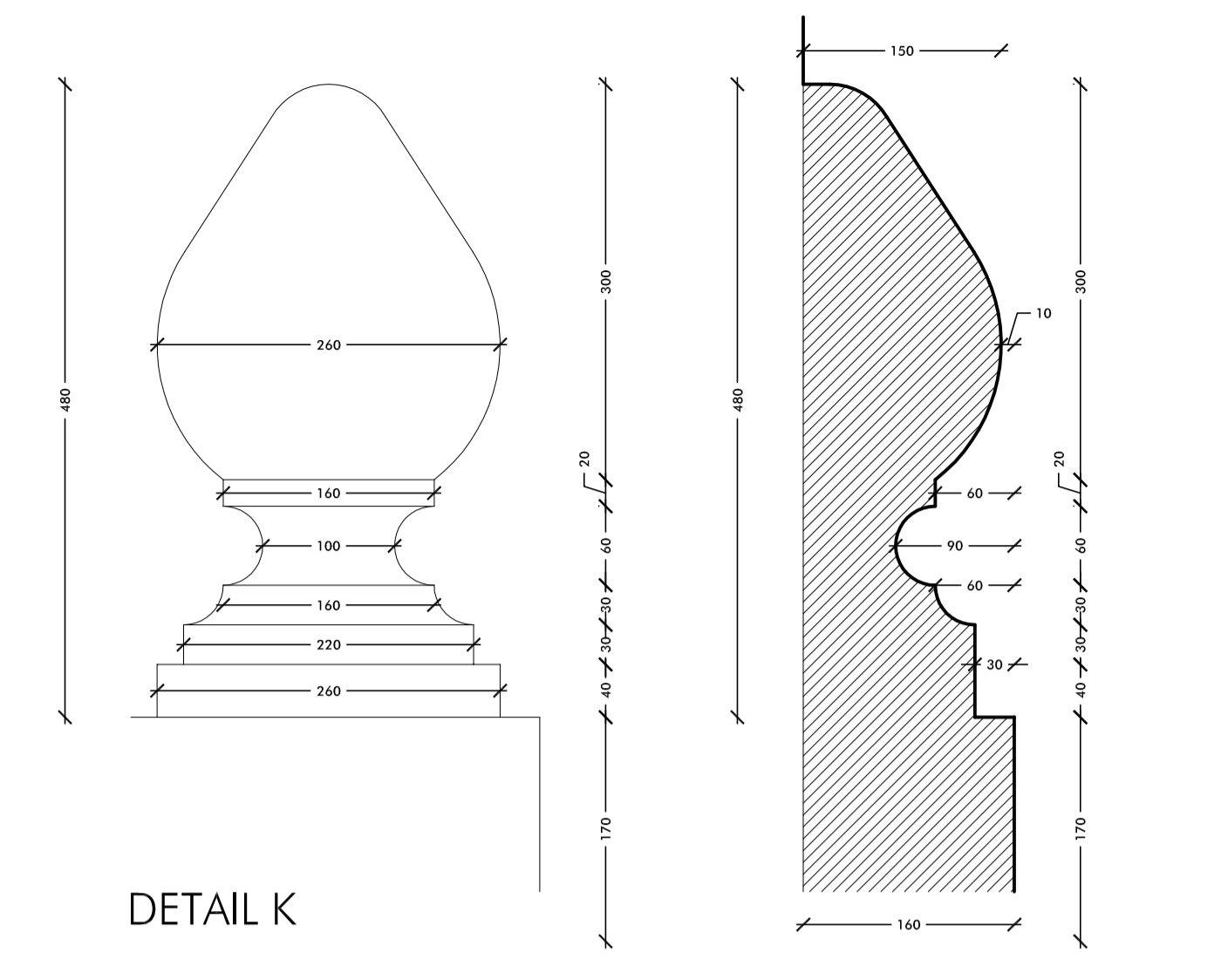


DETAIL O

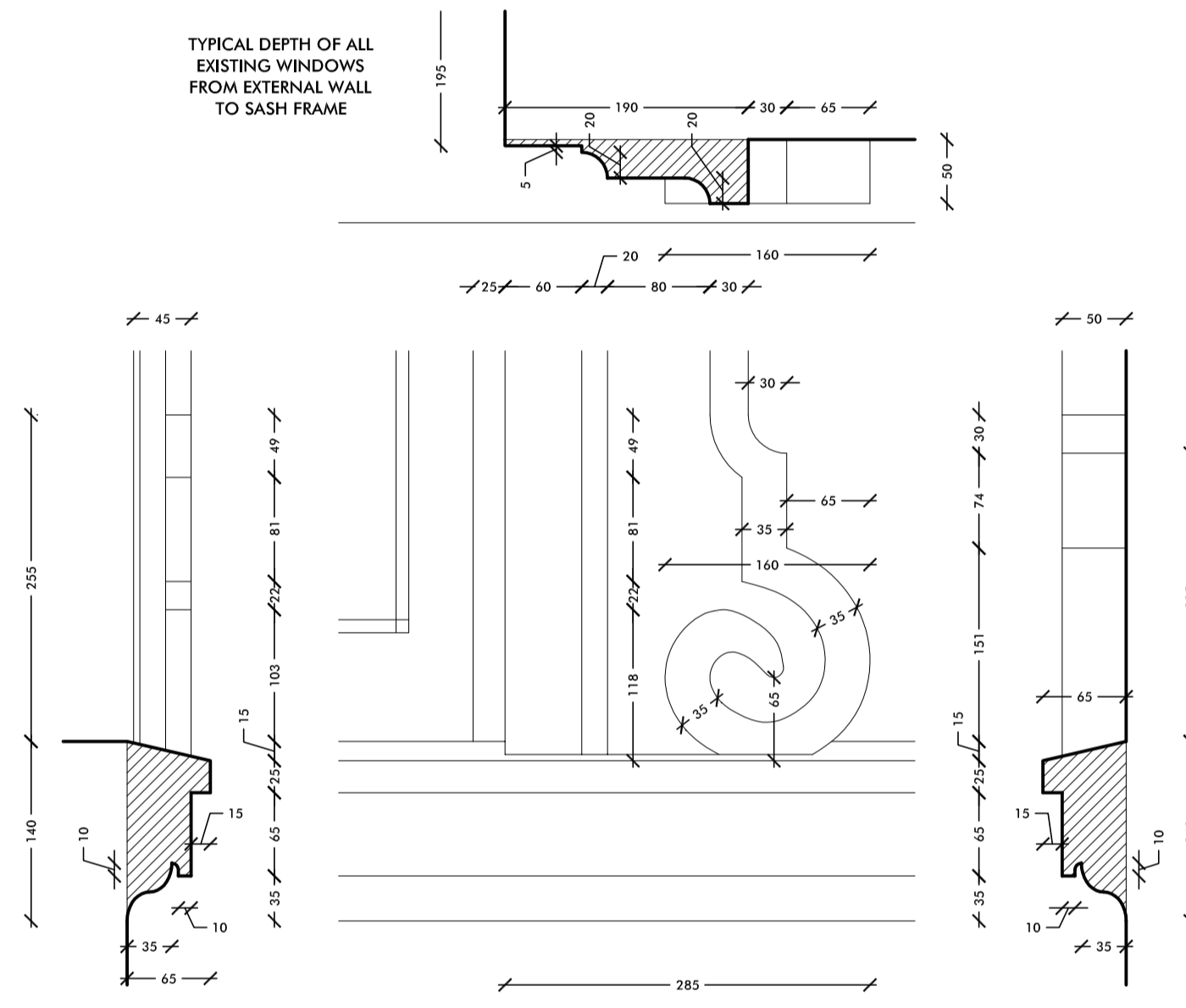


EXISTING FRONT ELEVATION

SCALE 1:200 IN METRES



DETAIL K



DETAIL P

TYPICAL DEPTH OF ALL EXISTING WINDOWS FROM EXTERNAL WALL TO SASH FRAME

NOTE: DRAWING TO BE READ IN CONJUNCTION WITH PHOTOGRAPHIC RECORD OF EXISTING DETAILS DOCUMENT PROVIDED SEPARATELY

SH DRAWN	DRAWN REVISION	FEB 18 DATE	SP VER
<p>ALLISON PIKE ARCHITECTS & DESIGNERS</p>			
<p>PROJECT PREMIER INN TUDNO CASTLE LLANDUDNO</p>			
<p>TITLE DETAILED SURVEY OF EXISTING FRONT ELEVATION CENTRAL WINDOW ELEVATIONS & SECTIONS</p>			
<p>SCALE 1:5, 1:20 & 1:200 @ A1</p>			
JOB No BAK01	DRAWING No AP102	REV	

7 Buxton Road West, Disleigh, Stockport, Cheshire, SK12 2AE. Telephone: 01663 763000
Website: www.allisonpike.com. Facsimile: 01663 766772
Email: studio@allisonpike.com

© Allison Pike Partnership Limited.