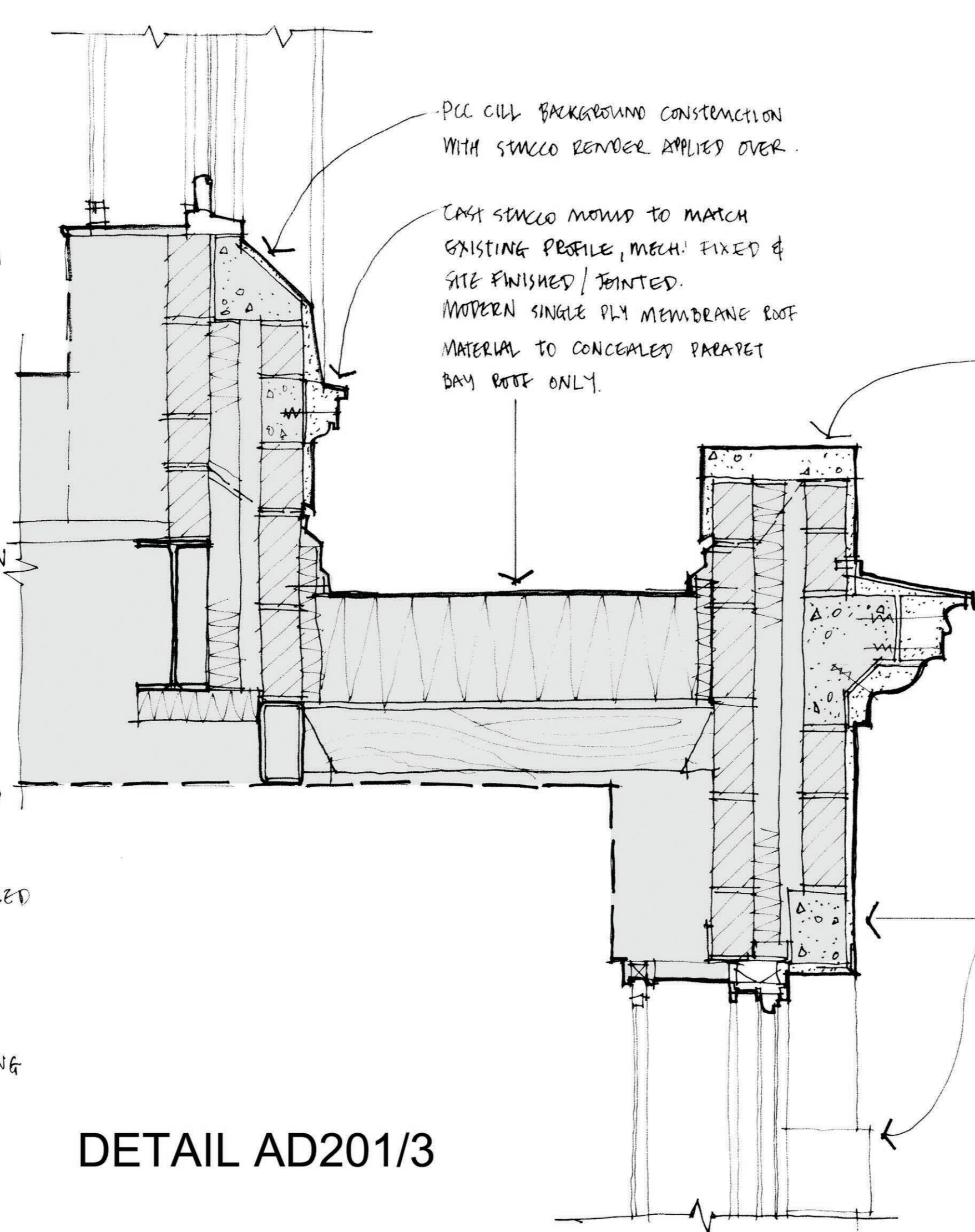
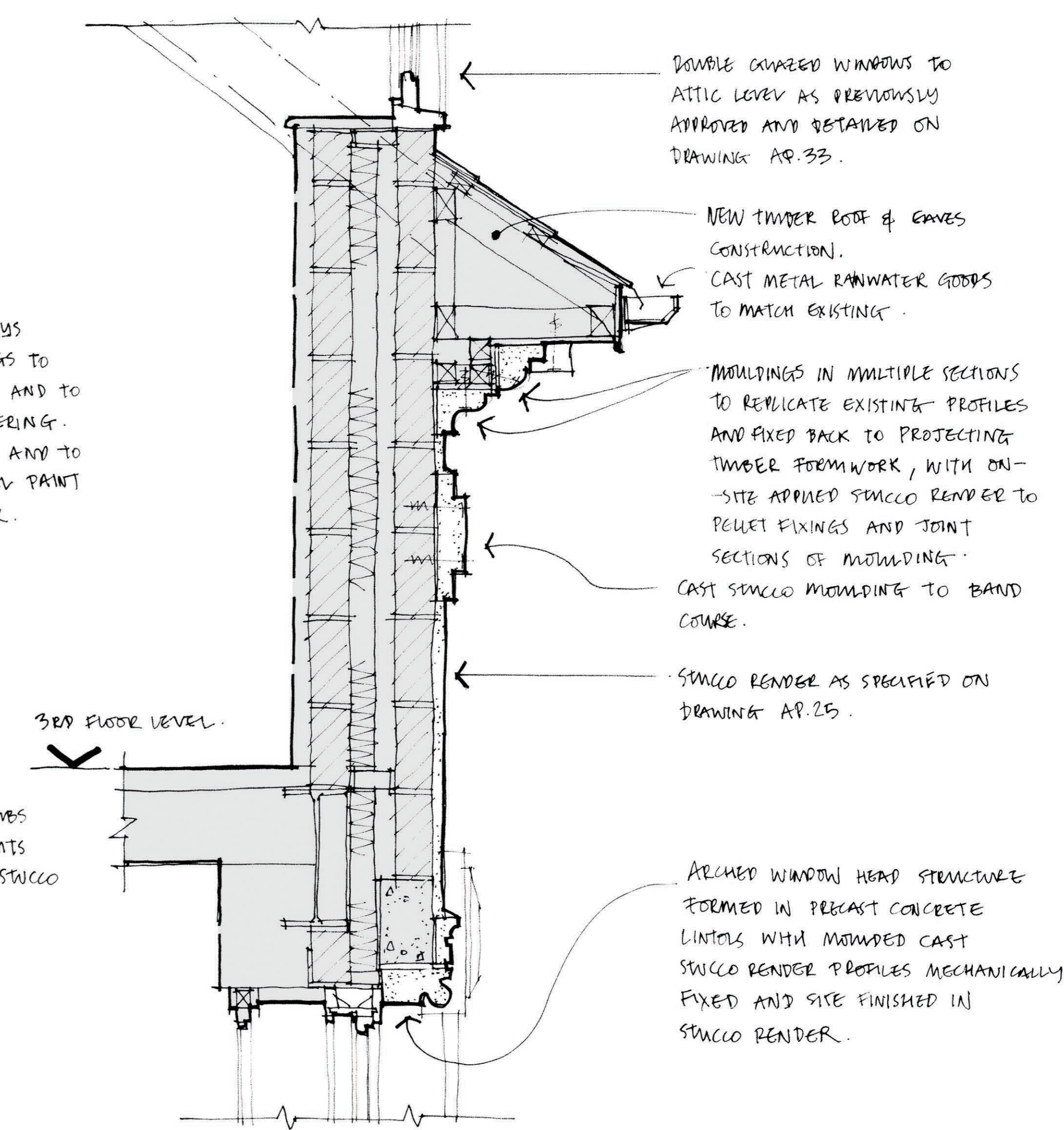


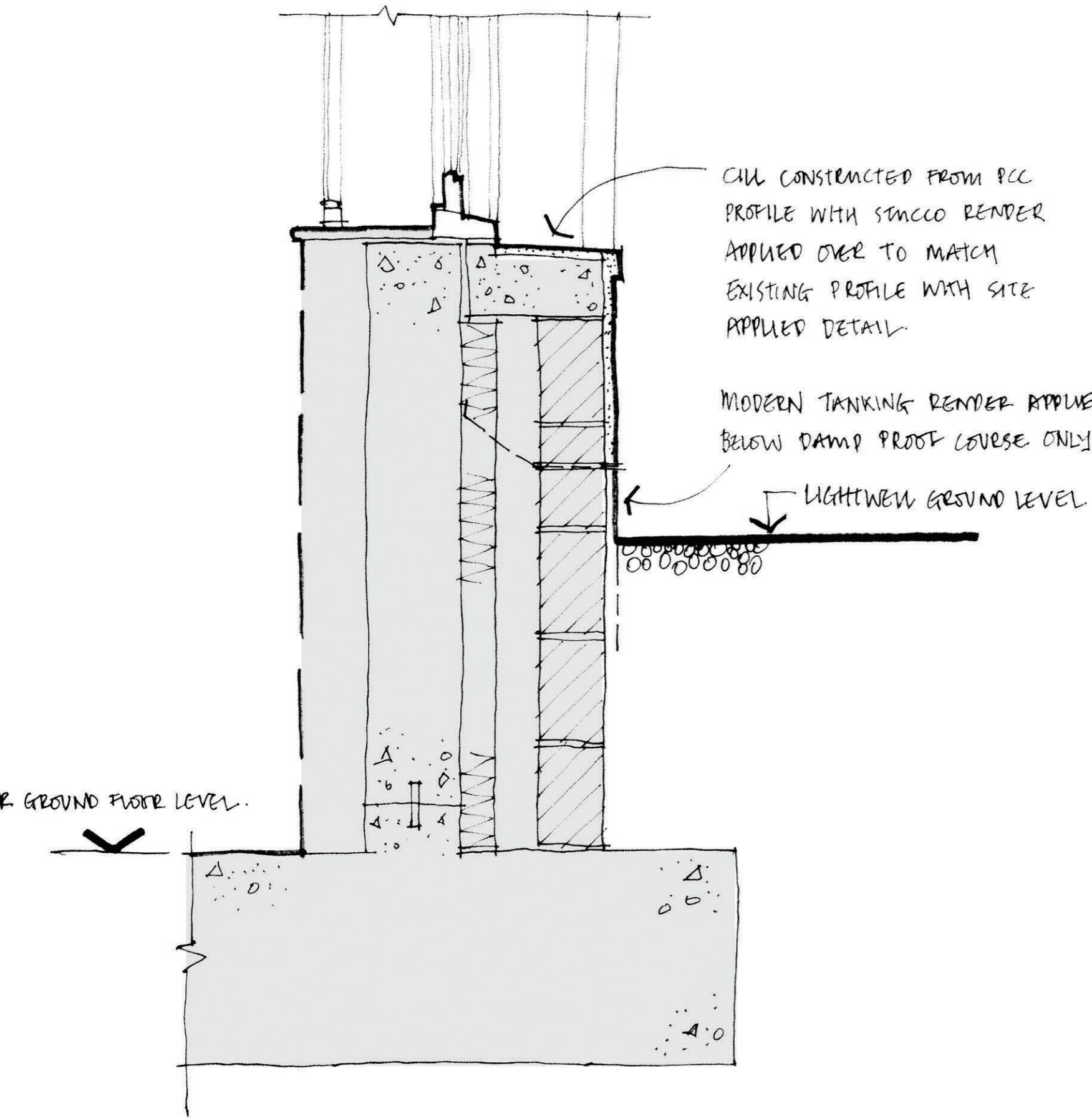
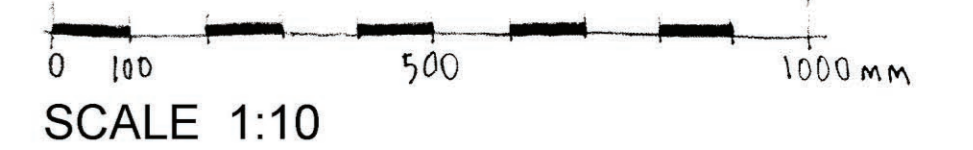
DETAIL AD201/2



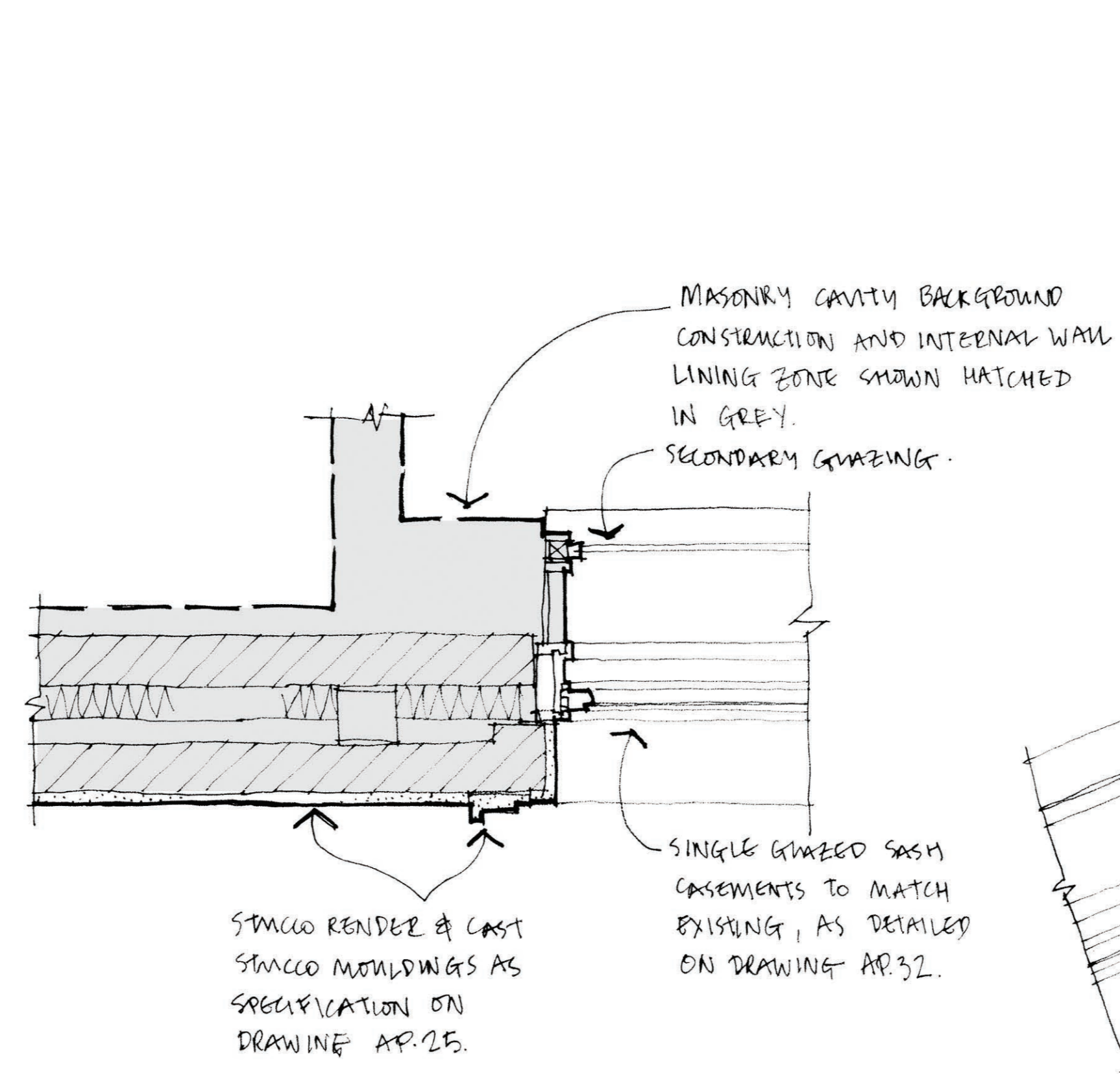
DETAIL AD201/3



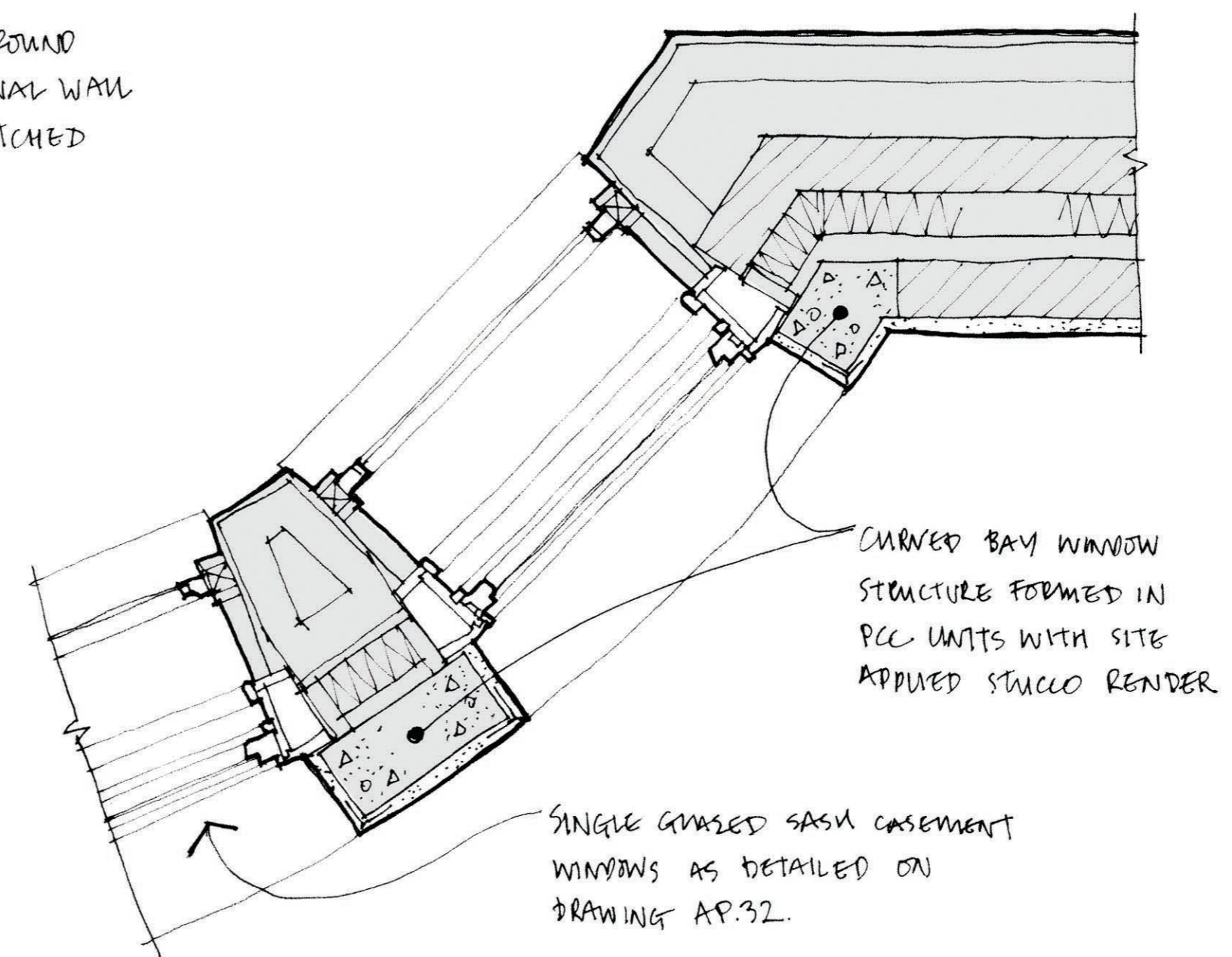
DETAIL AD201/4



DETAIL AD201/1



DETAIL AD201/5
TYPICAL WINDOW REVEAL



DETAIL AD201/6
TYPICAL BAY WINDOW REVEAL

SP	RENDER DETAILING	DEC 17
	RE-DRAWN	VER
RDM	DRAWN	JUL 17
DRAWN	REVISION	DATE
 ALLISON PIKE ARCHITECTS & DESIGNERS		
PROJECT TUNDO CASTLE LLANDUDNO		
TITLE PROPOSED TYPICAL REBUILT DETAILS		
SCALE 1:10 @ A1		
JOB No	DRAWING No	REV
BAK01	AP26	A

PLANNING ISSUE

7 Buxton Road West, Disley, Stockport, Cheshire, SK12 2AE. Telephone: 01663 763000. Website: www.allisonpike.com. Facsimile: 01663 766772. Email: studio@allisonpike.com

© Allison Pike Partnership Limited